

## XIL4 & XIL4T – In Line Axial Fans

### Installation and operating instructions.

Please leave this leaflet with the fan for the benefit of the user.

#### Installing the fan

These appliances are intended for connection to fixed wiring. Check that the electrical rating shown on each fan matches the mains supply. **THESE APPLIANCES ARE DOUBLE INSULATED AND DO NOT REQUIRE AN EARTH CONNECTION.**

All installations must be supervised by a qualified electrician. Installations and wiring must conform to local or appropriate regulations. **This appliance is not intended for use by persons (including children and the infirm) with reduced physical, sensory or mental capabilities, or lack of experience and knowledge, unless they have been given supervision or instruction concerning use of the appliance by a person responsible for their safety.**

**Children should be supervised to ensure they do not play with the appliance.**

If you have any queries before installing these products or after they have been installed, contact Dimpco (details shown below) or your local distributor.

#### Description

- **Model XIL4** is an In Line Axial Fan designed to extract damp air from your room to the outside and has all the components you need to install either in the loft/ceiling recess or through the wall, see diagrams **A** and **B**.
- **Model XIL4T** additionally features an overrun timer adjustable between 2 and 20 minutes.

#### Components

- 1 In Line Axial Fan with bracket
- 2 3 metre long Ø100mm / 4" ducting
- 3 White internal fixed louvre grille with 2 x invisible screw covers
- 4 Brown external fixed louvre grille with 2 x invisible screw covers
- 5 3 x Brown Interchangeable external shutter vanes (if required)
- 6 6 x Wall plugs
- 7 6 x Screws
- 8 2 x Self-Adhesive foam strips for duct connections (if required)

#### What the installer will need

- A means for disconnection in all poles must be incorporated in the fixed wiring in accordance with wiring regulations.
- **If metal switch boxes are used, earthing regulations must be followed.**
- Suitably rated flexible 2-core cable for XIL4 (Fan to on/off or isolating switch).
- Suitably rated flexible 3-core cable for XIL4T (Fan to on/off or isolating switch).
- Screwdrivers.
- A wall or ceiling on/off switch with built-in indicator light (if not wiring to existing lighting circuit).
- A Masonry drill, hammer & chisel (or core drill equipment if available) for through wall installation.
- A hacksaw (if fitting the fan through wall) to remove bracket.
- Suitable ceiling fixings (if required).

#### Positioning the fan

- Refer to Building and local Regulations for specific requirements.
- **If installing in a room containing a fuel burning device which has a non-balanced flue, it is the installer's responsibility to ensure that there is enough replacement air to prevent fumes being drawn down through the flue when the fan is operating up to maximum extract.**
- **Not where ambient temperatures are likely to exceed 50°C.**
- **The fan should not be accessible to a person using either the shower or bath.**

Decide where to position the fan based on the following two installation routes:-

##### Through the loft/ceiling space

From the ceiling through the roof space and out through the soffit; see **A** for general installation arrangement.

Choose the position of the internal grille, fan and external grille by the following criteria:

- Internal grille ideal above shower.
- Internal grille to be located between joists.
- Create easiest route for ducting with fewest bends and shortest length.

##### Through the wall

From an internal wall directly out through the wall; see **B** for general installation arrangement.

Choose the position of the internal and external grilles by locating them according to the following criteria:

- If fitting internal grille near to shower, to prevent water splashing into fan it must be fitted above the maximum height of the shower head.
- As high as possible on the wall.
- Where there are no buried pipes or cables in the wall.

#### Installing the isolating switch and cables

1. Check that the electrical rating shown on the appliance matches your mains supply.
2. Check there are no buried pipes or cables e.g. electricity, gas, water behind the switch location (in the wall or above the ceiling).  
If in doubt, seek professional advice.
3. Isolate the mains supply.
4. Lay in the cable from the isolating switch to the fan location via the on/off switch (if required).
5. Lay in the cable from the isolating switch to the point of connection to the mains supply.
6. Install the isolating switch and on/off switch (if required).
7. Make all connections within the isolating switch and the on/off switch (if required).  
**Note: on/off switch must be situated so that it cannot be touched by persons making use of the bath or shower.**  
**WARNING DO NOT MAKE ANY CONNECTIONS TO THE ELECTRICAL SUPPLY AT THIS STAGE. If in doubt, seek professional advice.**

#### Holes and installation

If working above ground floor level, safety precautions must be observed. **WARNING: EYE PROTECTION MUST BE WORN DURING ALL DRILLING AND CHISELING OPERATIONS.**

##### Through loft/ceiling recess to soffit board

1. Create the positions for the internal grilles by marking on the ceiling and the soffit the centre of the duct hole.
2. Use this centre to mark a circle to suit the wall duct (Ø115mm / 4.5").
3. Cut a Ø115mm / 4.5" hole in the ceiling and soffit.
4. Align the grille centrally and squarely over the hole and mark the positions of the two screw holes. Drill the two holes and insert suitable ceiling fixings.
5. Select a suitable place for the fan to be screwed to a joist, either on top (using a plank if necessary) or on the side – but not under any roof insulation. Secure it with the fan blades towards the external grille using two screws through the fixing bracket - the arrow on the body shows direction of airflow.
6. Make the electrical connections as detailed in "Electrical Connections" section.
7. Attach the brown external grille to the outer end of the flexible duct **C**.  
The external grille has optional shutter vanes, if required, simply remove the fixed vanes and replace with the 3 shutter vanes shown in **D**.
8. From the outside feed the ducting through the hole until the grille is flush with the soffit. Secure the grille to the soffit with the screws and fit screw covers.
9. Pull the flexible ducting gently to the discharge end of the fan and cut it to length.  
Tip: keep the ducting as straight as possible as this will prevent loss in performance of the fan.
10. Connect the remaining piece of ducting to the internal grille, pass through the hole, screw to the ceiling and connect to the other end of the fan as described previously

##### Through the wall

1. Check there are no buried pipes or cables in the wall or obstructions on the outside e.g. electricity, gas, water.
2. Mark on the wall the centre of the duct hole.  
If fitting internal grille near to shower, to prevent water splashing into fan it must be fitted above the maximum height of the shower head.
3. Use this centre to mark a circle to suit the wall duct (Ø115mm / 4.5").

##### If core drill equipment is available:

- 4a. Use as directed by core drill manufacturer.

##### If core drill equipment is not available

- 4b. Drill a centre hole right through the wall.
5. Cut the hole. Do not cut right through the wall. (The recommended method is to drill a series of holes, close together, around the edge of the cutting line and remove the brick between the holes with a chisel).
6. Go outside and cut a hole in the outer wall, repeating the process above.
7. Align the grilles centrally and squarely over their holes and mark the positions of the two screw holes. Drill the two holes and insert wall plugs supplied.
8. Remove the mounting bracket from the fan by sawing off with a small hacksaw.
9. If necessary, cut an appropriate slot in one side of the internal grille where the cable will exit.
10. Join together the internal grille and fan.
11. Connect wiring as detailed in "Electrical Connections" section.
12. From the outside pull the assembly through the hole. Screw the internal grille to the wall and fit the screw covers. Cut the ducting to length allowing enough to enable you to tie the ducting to the brown external grille. Secure the external grille as previously described.
- **Ensure that the duct slopes down away from the fan to allow drainage of any incoming rain water to the outside.**

#### Electrical Connections

- For fixed wiring circuits the fuse for the appliance must not exceed 5A
- All wiring must be fixed securely.

##### Switch off the mains supply before making any electrical connection.

1. Remove the cover of the fan by springing out the spring clips.
2. Remove the cable clamp.
3. Wire the fan as shown in **E**, check fan model to diagram.
4. Replace the cable clamp and two screws.  
Ensure the cable is firmly retained by the clamp.
5. Adjust the timer (XIL4T Model):  
Isolate the fan from the mains before adjusting the timer.  
The XIL4T has a variable overrun timer of between 2 minutes and 20 minutes. Turn the adjustment screw **X** with an electrical screwdriver clockwise to reduce the time and anticlockwise to increase the time.  
Test the timing is satisfactory immediately after connecting the electricity supply, as access will be limited after completion of the installation.
6. Replace the terminal cover.
7. **Switch off the mains electrical supply and remove fuses.**
8. Connect the cable from the isolating switch to the electrical supply wiring.

#### Using the fan

##### XIL4 only

- Operate the fan using the double-pole isolating switch.

##### XIL4T only

- Operate the fan using an on/off switch. When the switch is turned off, the fan continues to operate for the adjusted time delay. To adjust the overrun period, turn the adjustment screw **X** with an electrical screwdriver clockwise to reduce the time and anticlockwise to increase the time.

#### Cleaning

The grilles can be washed with a mild household cleaner.

#### Guarantee

Please contact your local distributor for details.

#### Head Office, Sales Office and Spares

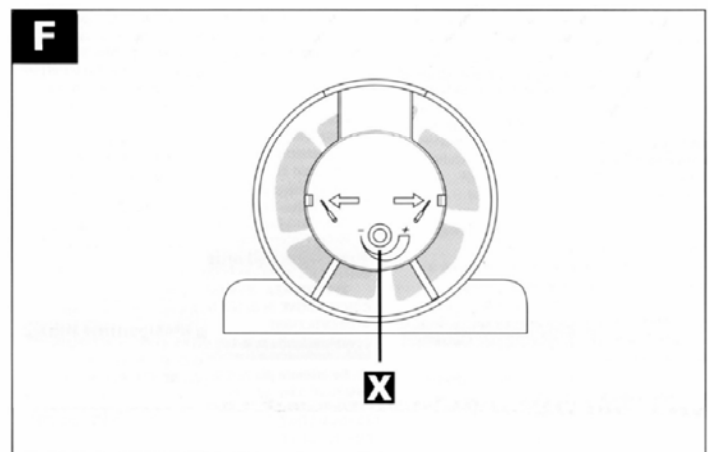
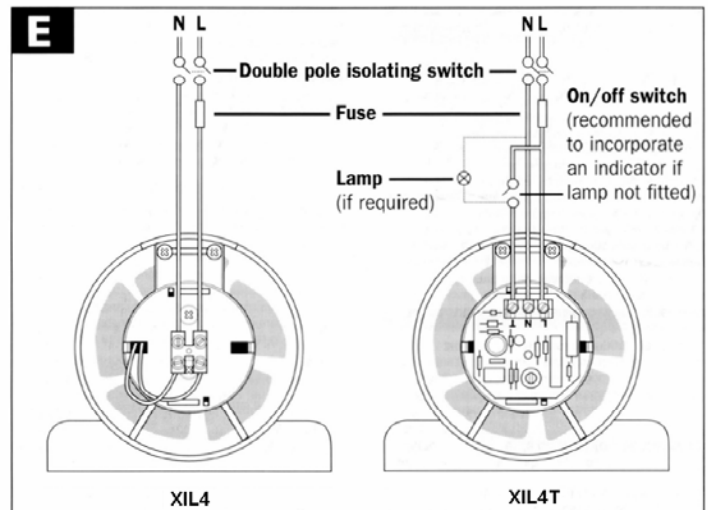
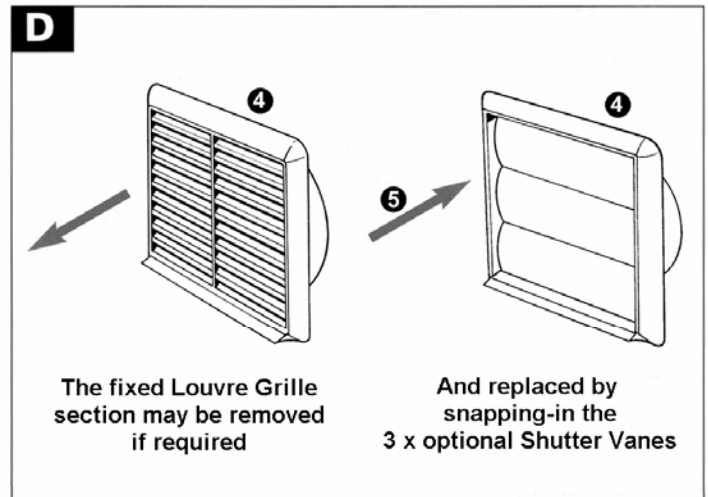
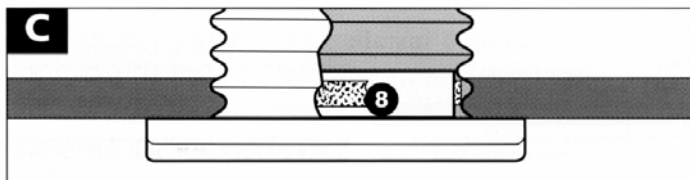
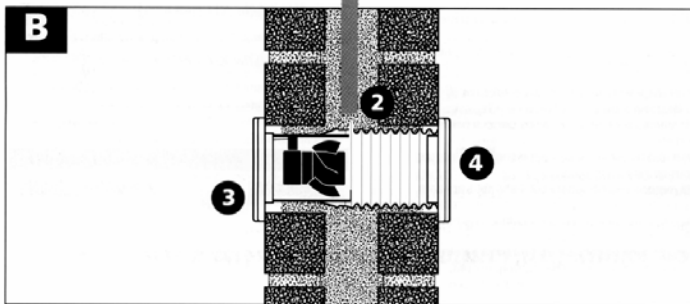
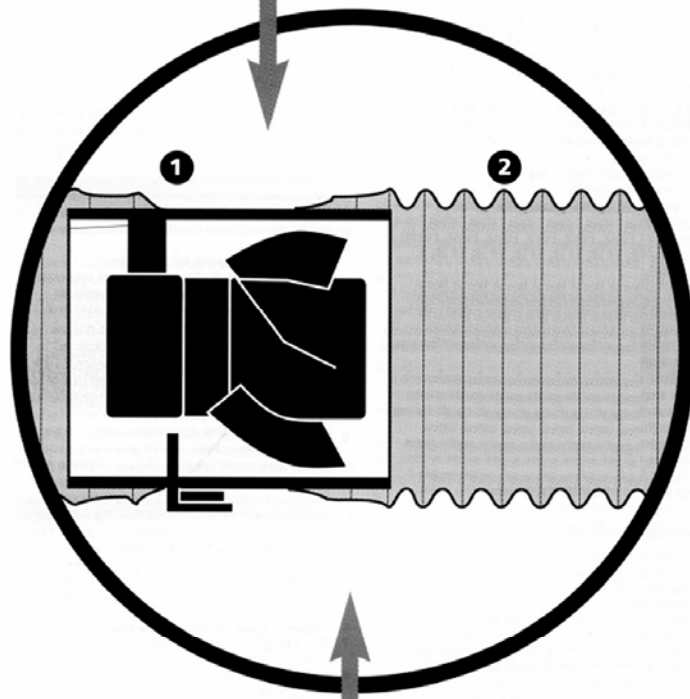
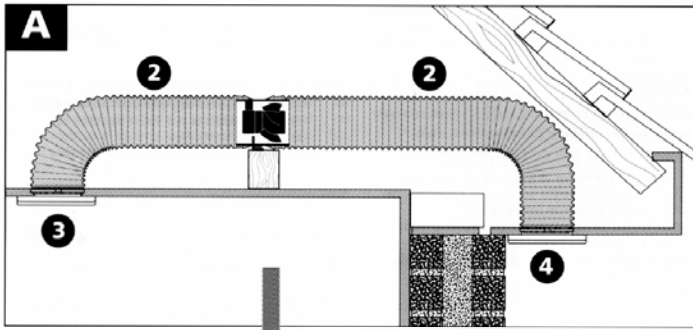
Dimpco, Old Airport Road, Dublin, Co Fingal, Ireland.

E-Mail: service@dimpco.ie

Service Tel: +353 1842 8222

**Do's and Don'ts**

- Do read the entire instruction leaflet before commencing installation.
- Do install each fan with a means for disconnection in all poles in the fixed wiring ie: with a double pole isolating switch.
- Do not mount the fan immediately behind grille if it is likely to be exposed to splashing water.
- If fitting internal grille near to a shower, to prevent water splashing into fan, it must be fitted above the maximum height of the shower head.
- Do make sure the mains supply is switched off before attempting to make electrical connections or carry out any maintenance or cleaning.



**Dimpco**

